

Joy & Love Christmas Towels

Master Colorlist

ANCHOR	DMC		
Embroidery Thread			
/	1	B5200	snow white
B	110	208	lavender dk.
M	109	209	lavender med.
Z	108	210	lavender
X	9046	321	Christmas red
=	398	415	pearl grey
O	47	498	Christmas red dk.
G	102	550	violet vy. dk.
∟	46	666	Christmas red bright
C	255	704	kelly green vy. lt.
+	234	762	pearl grey lt.
*	45	814	garnet med.
e	1044	895	hunter green dk.
b	266	3347	hunter green lt.

GLISSENGLOSS™

Rainbow™ Blending Thread	
308	lime green for backstitching in borders
617	red for backstitching in borders

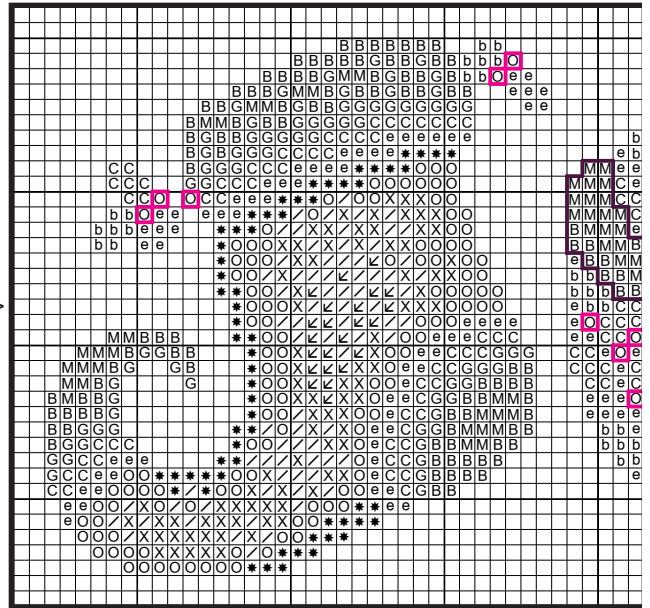
Backstitch berries (lines printed in pink) in ANCHOR 47/ DMC 498.
 Backstitch ribbons and bows (lines printed in purple) in ANCHOR 102/ DMC 550.

Backstitch vines and leaves (lines printed in green) in ANCHOR 266/ DMC 3347.

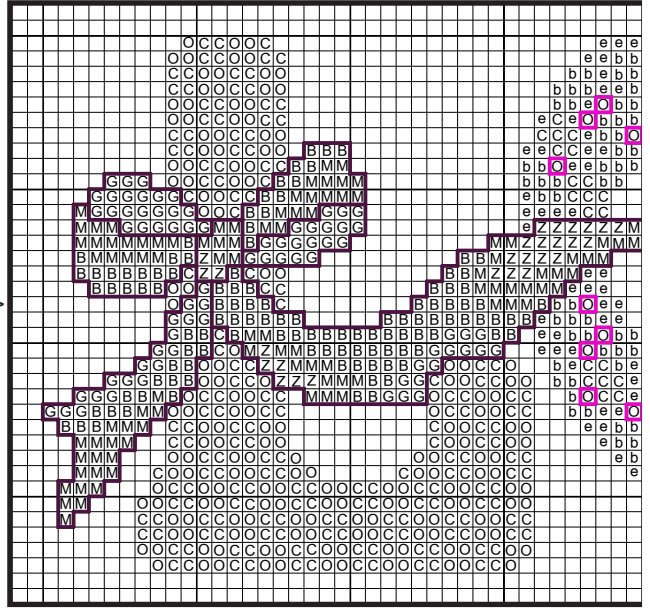
Backstitch red lines in border in GLISSENGLOSS™ 617 red Rainbow™ Blending Thread.

Backstitch green lines in border in GLISSENGLOSS™ 308 lime green Rainbow™ Blending Thread.

All other backstitching (lines printed in red) is done in ANCHOR 45/ DMC 814.



Stoney Creek Collection, Inc. © 2019



LONG ARMED STITCH DECORATIVE BORDERS

Beginning at the left edge of the towel and leaving one row open at the top and bottom of each border (see photo below), using 2 strands of either ANCHOR 9046/ DMC 321 or ANCHOR 1044/ DMC 895, come up at 1, go down at 2, come up at 3, go down at 4, etc. continuing to the opposite edge of the towel. The green and red long armed stitched borders are separated by two rows of backstitching. See backstitching instructions above for backstitching thread colors. Notice you will compensate this stitch at the end of the row by going over only 2 threads instead of 4.



TOP- LONG ARMED DECORATIVE BORDER WITH BACKSTITCHING

